

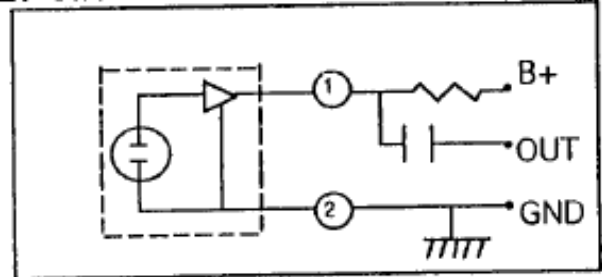
MEMPHIS BOX CO. INC.

1. SENSITIVITY

($ODB=1V/\mu\text{bar}$, 1KHZ,
 $VCC=4.5V$, $RL=1K\Omega$)

-60+/-3DB

2. CIRCUIT DIAGRAM



3. SPECIFICATIONS

1. IMPEDANCE: LOW
2. STANDARD VOLTAGE: 4.5 V
3. RANGE OF OPERATING VOLTAGE: 1.5 V TO 10 V
4. CURRENT DRAIN: 0.5mA Max
5. S/N RATIO: 40 db or more
6. MAXIMUM INPUT SOUND PRESSURE: 120 db SPL

4. DIMENSION

